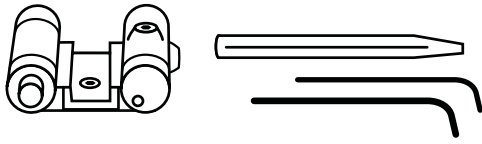


## Rear Sight Laser for all Glock® Models

RL-1

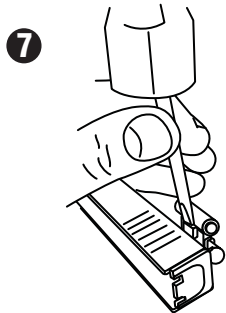
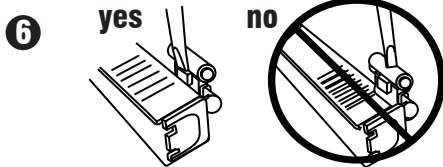
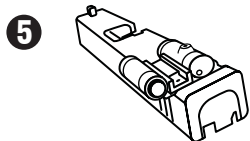
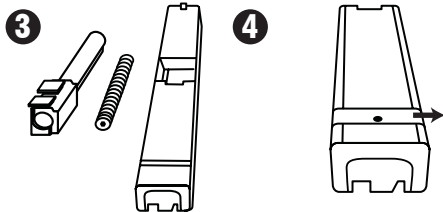


### Installation:

- 1 **UNLOAD YOUR FIREARM!**
- 2 **Attach danger label to slide of gun near laser with arrow pointing toward front sight.**
- 3 **Remove slide from frame, then remove spring and barrel.**
- 4 **Remove rear sight from slide.**
- 5 **With laser facing toward the front, start laser dove tail into the dove tail of the Glock® slide.**
- 6 **Using provided brass punch, place narrow tip of punch onto flat surface of the laser dove tail.**
- 7 **Using a small hammer, tap punch until the laser is centered in the middle of the Glock® slide.**
- 8 **Using the included .050 Allen wrench, tighten locking screw in the center of the laser.**

### 1 UNLOAD YOUR FIREARM!

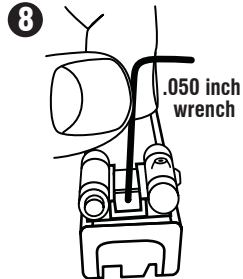
- 2 **Attach danger label to slide of gun near laser with arrow pointing toward front sight.**



yes

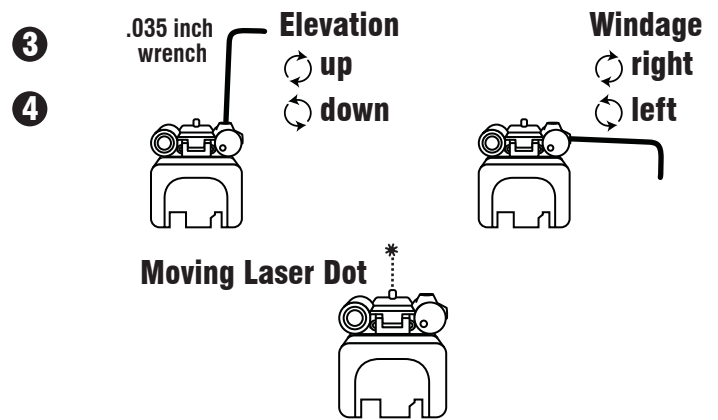
no

no



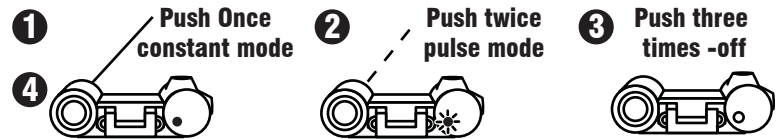
### Laser Sight In:

- 1 **Assemble barrel and spring into slide and then install back onto gun.**
- 2 **Make sure your firearm is unloaded and always point in a safe direction.**
- 3 **Use the provided .035 Allen wrench to adjust the sight.**
- 4 **Always end adjustments on a clockwise turn.**
- 5 **Make final adjustments at shooting range.**



### Activation:

- 1 **Push button once and the laser will be on constant mode.**
- 2 **Push button twice and the laser will be on pulse mode.**
- 3 **Push button three times the laser will turn off.**
- 4 **The small L.E.D. on the back will indicate what mode you are in.**



### Battery Installation: (4) 377

- 1 **Unscrew battery cap and remove batteries.**
- 2 **Install new batteries.**
- 3 **Screw in battery cap and tighten.**



### Uninstall:

- 1 **Follow steps 1-3 in Installation Instructions.**
- 2 **Back out setscrew in center of Laser.**
- 3 **Using brass punch put the narrow end of the punch on the flat surface of the laser dove tail.**
- 4 **Using a small hammer drive the laser out from right to left.**
- 5 **Back out laser setscrews until flush.**
- 6 **Wait 15 minutes for adjustment reset and reinstall if desired.**

WARRANTY:  
One Year Limited  
Warranty.



**LASERLYTE®**  
A Division of P&L Industries  
101 Airpark Road - Cottonwood, AZ 86326  
Phone 928-649-3201 - Fax 928-649-3970  
www.LaserLyte.com