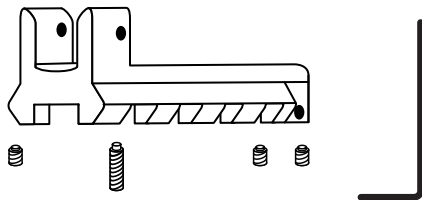


# Revolver Rail - Charter 44

ADP-CH44-140

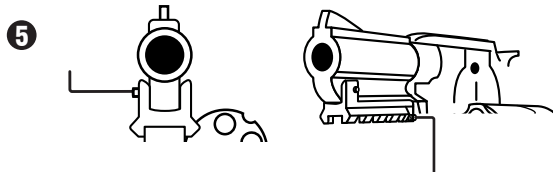
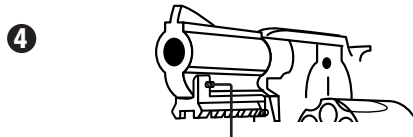
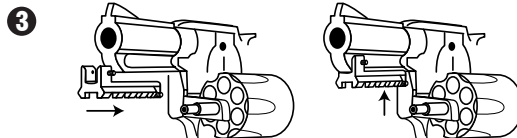
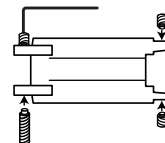


- 1 UNLOAD YOUR FIREARM!**
- 2 Start each screw into the correct location on the rail.  
3 brass screws & 1 brass tipped screw  
Do not thread all the way**
- 3 Slide the rail under the barrel lug and push into place.**
- 4 Tighten the one brass tipped screw into the barrel lug.  
DO NOT OVER TIGHTEN**
- 5 Tighten the 3 brass screws around the mount until snug.**

**Disclaimer:** The use of this product may cause wear marks on the frame of the firearm. The owner of this rail adapter accepts all responsibility for the marks on his or her firearm.

## 1 UNLOAD YOUR FIREARM!

- 2** Top View of rail.



A Division of P&L Industries  
101 Airpark Road - Cottonwood, AZ 86326  
Phone 928-649-3201 - Fax 928-649-3970  
[www.LaserLyte.com](http://www.LaserLyte.com)

**WARRANTY:**  
**One Year Limited  
Warranty.**